

Destinations With Grace presents...

# Discover America's Music Cities

May 17 – 24, 2026



Book Now  
& Save  
**\$150**  
Per Person

For more information contact  
Grace Cheng Braun  
Destinations with Grace, LLC  
**(310) 729-5221**  
**[grace@chengbraun.com](mailto:grace@chengbraun.com)**

**collette**





**8 Days • 11 Meals:** 7 Breakfasts, 2 Lunches, 2 Dinners

**HIGHLIGHTS...** Grand Ole Opry Performance, Historic RCA Studio B, Civil Rights Tour, Graceland, Ryman Auditorium, Country Music Hall of Fame, Barbecue Lunch, Jazz Revue, French Quarter

#### ITINERARY AT A GLANCE

Days 1, 2 Sheraton New Orleans, New Orleans, Louisiana  
 Day 3 The Inn at Ole Miss, Oxford, MS  
 Days 4, 5 The Guest House at Graceland, Memphis, Tennessee  
 Days 6, 7 Gaylord Opryland Resort, Nashville, Tennessee

*On some dates alternate hotels may be used.*

#### **Optional Pre Night:** **Sheraton New Orleans**

**Rates: Double \$150 per person per night;  
 Single \$300 per person per night; Triple \$140  
 per person per night**

*(Includes hotel to airport transfer with the purchase of  
 air inclusive tour package. Rates are subject to change  
 and based on availability at time of booking)*

**Day 1: Sunday, May 17, 2026 New Orleans, Louisiana** Step back in time on a cultural getaway that opens in the "Jazz Capital of the World," New Orleans! This soulful city abounds with rich history, mouthwatering Cajun and Creole cuisine, and of course, an incomparable soundtrack. There are no included features today, so take in the sights, flavors, and sounds of New Orleans on your own today before meeting your group in the morning.

**Day 2: Monday, May 18, 2026 New Orleans** Explore the many sides of New Orleans and how jazz began and thrives here. Join a local guide for a panoramic city tour, seeing the famous St. Louis Cemetery #3 and Esplanade. Then, it's on to a walking tour of the French Quarter viewing St. Louis Cathedral, Pirates Alley and more. Tonight, get to know your travel companions at a New Orleans-style dinner before continuing on to Maison Bourbon, a live jazz club in the French Quarter. (B, D)

**Day 3: Tuesday, May 19, 2026 New Orleans - Oxford, Mississippi** Leave New Orleans on a high note and head to the charming college town of Oxford. (B, D)

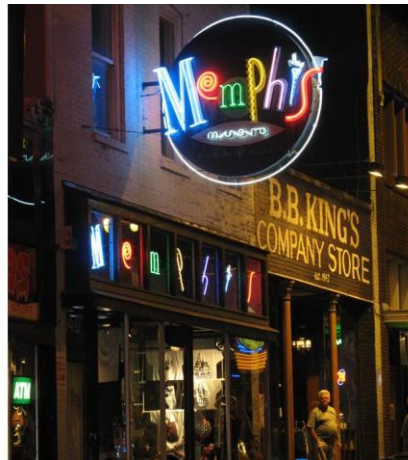
**Day 4: Wednesday, May 20, 2026 Oxford - Memphis, Tennessee** Travel north to Memphis, the birthplace of the Blues, Rock 'n' Roll, and Soul. Enjoy Southern hospitality at your hotel before jiving along to "Jailhouse Rock" as you visit Graceland, the stately mansion of the "King" himself, and tour Elvis's 14-acre estate, including his home, private jets, and Meditation Garden. (B)

**Day 5: Thursday, May 21, 2026 Memphis** This morning, embark on a civil rights history tour via coach and follow the route of Martin Luther King Jr.'s last march, stopping at Mason Temple where he gave his famous "I've Been to the Mountaintop" speech the night before he was assassinated. Take time to explore how the era continues to shape equality and freedom to this day during a visit to the National Civil Rights Museum. Next, savor a lunch of down-home barbecue done Memphis-style: dry-rubbed and slow-smoked with sauce on the side! Get a taste of the Southern barbecue tradition and its deeply rooted spirit of community. Later, get acquainted with the musical history of Memphis with a visit to Sun Studio, perhaps the most famous recording studio in the world before continuing on to the Memphis Rock 'n' Soul Museum, highlighting the musical journey of this popular city. (B, L)

**Day 6: Friday, May 22, 2026 Memphis - Nashville** Roll along Music Highway to Nashville – the "Music Capital of the World." Arrive in Nashville and tour the historic Ryman Auditorium,\* the original home of the Grand Ole Opry. What began as a building where a local radio broadcast show aired once a week in 1925 has grown to become an entertainment complex that attracts music fans from all over the world. After some free time for lunch, **it's your choice!** Join a hands-on chocolate-making lesson at the iconic Goo Goo Candy Shop **-OR-** visit the Johnny Cash Museum where you'll be immersed in the life and legacy of Johnny Cash, a "100 Greatest Artists of All Time" honoree. This evening, take your reserved seat at the renowned Grand Ole Opry.\*\* (B)

**Day 7: Saturday, May 23, 2026 Nashville** This morning, tour RCA Studio B and gain an insider's look at Nashville's oldest remaining recording studio, where Elvis Presley, Dolly Parton, and Charley Pride once recorded classic hits. You may even have the opportunity to record your own hit! Then, visit historic Belle Meade, the first and oldest winery in Nashville, for a tour of the Greek Revival mansion and wine tasting followed by a farewell lunch on this fascinating property. Round out your musical journey at the Country Music Hall of Fame, the world's largest museum of popular music, and check out the vast collections of memorabilia, costumes, recordings, and instruments. (B, L)

**Day 8: Sunday, May 24, 2026 Nashville - Tour Ends** Your rockin' musical journey comes to a close today. (B)



## Book Now & Save \$150 Per Person:

Double ~~\$4,099~~; **Double \$3,949\***  
 Single ~~\$4,999~~; **Single \$4,849;**  
 Triple ~~\$4,049~~ **Triple \$3,899**

**For bookings made after Nov 17, 2026 call for rates.**

**Included in Price:** Round Trip Air from Los Angeles Intl Airport, Air Taxes and Fees/Surcharges, Hotel Transfers

**Not included in price:** Cancellation Waiver and Insurance of \$429 per person

**\* All Rates are Per Person and are subject to change, based on air inclusive package from LAX**

**IMPORTANT CONDITIONS:** Your price is guaranteed once deposit is received and booking confirmed by Collette. Your price is not subject to increase after the deposit is received and booking confirmed, except for charges resulting from increases in government-imposed taxes or fees. **(See registration form for consent.)**

### Important Tour Information:

**Book Now rates valid until Nov 17, 2026, valid on air inclusive packages only.**

**The overall activity level of this tour is a level 2.** This means you like a balanced approach to travel. Walking two to three miles over the course of a day is no problem for you. You can handle a variety of terrains, from cobblestone streets to moderate hills with relative ease and without assistance. You can climb two flights of stairs with ease. Expect some full days balanced with free time to recharge or set out on your own adventure. You can handle altitudes up to 6,000 feet. While this level is appropriate for travelers that require mobility assistance devices, there could be times when you may have to sit out on some of the included activities.

**Travel with an average of 37 people (maximum of 44).**

If you require any special assistance while on tour, please make us aware at time of reservation so the necessary request form can be sent to your attention.

During the one-hour walking tour of New Orleans' French Quarter, you will need to walk over uneven, bumpy sidewalks.

**\*\*The Grand Ole Opry may move to the Ryman Auditorium during the months of November and December and throughout the year during special events.**

\*On some dates, the old Ryman Auditorium may be closed for special events.

Single accommodations are limited and are available on a first-come, first-served basis. Single rate subject to change based on availability.

To complete your tour, we include roundtrip airport-to-hotel transfers when purchasing our airfare with your tour. If you have arranged for your own air, we are pleased to provide you the option of purchasing these transfers. Please note that all transfers will leave at pre-scheduled times.

For air-inclusive reservations, the name provided at time of booking must match your government-issued ID that will be used during travel. Name changes are subject to penalties.

Please be advised many airlines do not provide advance seat assignments until check-in at the airport. Advance seating will be subject to the airline's terms and conditions.

Economy air rate and schedule are applicable for groups of 10 or more traveling on the same flights and dates.

### Travel Requirements:

#### IDENTIFICATION

Travel within USA

### Experience It! Ryman Auditorium

The "Mother Church of Country Music," the "Carnegie Hall of the South," the "Soul of Nashville"... welcome to Ryman Auditorium, a 2,000-plus seat venue in the heart of Nashville with a history as deep as country roots. Named for its founder, a wealthy riverboat owner, the Ryman first opened its doors in 1892 as the Union Gospel Tabernacle, but what many folks don't know is that the Ryman was the original home of the Grand Ole Opry. In fact, the Opry's formative years were spent on Ryman's stage, having featured the debuts of music titans Earl Scruggs and Hank Williams, and hosting the very first meeting between Johnny Cash and June Carter. Even Patsy Cline became a member of the Opry at the Ryman in 1960. While the Grand Ole Opry has lived at a new venue since the seventies, the Ryman remains a vital music venue on the Nashville circuit and is a designated National Historic Landmark thanks to its pivotal role in the popularization of country music. See it for yourself when country music comes to life in Ryman's exhibit, "The Soul of Nashville," and let the Mother Church move you!

**For more information visit <https://gateway.gocollette.com/link/1368339>**



A deposit of \$698 per person is due upon reservation. Reservations are made on a first come, first served basis. Reservations made after the seat reduction date of November 10, 2026 are based upon availability. Final payment due by February 16, 2026. Deposits are refundable up until November 17, 2026.

**NOTES:**

This image shows a blank sheet of white paper with horizontal ruling lines. The lines are evenly spaced and run across the width of the page. There are no margins, text, or other markings on the paper.This image shows a single sheet of white paper with horizontal blue or grey ruling lines. The lines are evenly spaced and run across the width of the page. There are approximately 20 lines visible. The paper has a slight shadow on the right side, suggesting it's resting on a surface.

**For important reservation information visit  
<https://gateway.gocollette.com/link/1368339>.  
You can also find this information on your tour documents.**



162 Middle Street  
Pawtucket, RI • 02860  
Phone: 1-800-852-5655

---

BOOKING NUMBER: 1368339

TOUR: Discover America's Music Cities featuring New Orleans, Memphis & Nashville

DEPARTURE DATE: May 17, 2026

GROUP NAME: Destinations With Grace

### Available Options

Personalize your tour by adding an optional activity below. Our recommended options have been carefully chosen to help enhance your individual experience. Complete the provided Prepaid Options Form to reserve your options.

*Availability is limited and reservations are on a first come, first serve basis. Payment must be received no later than 15 days prior to departure. Prices are subject to change.*

Children under the age of 18 **MUST** be accompanied by an adult.

---

#### New Orleans, LA

##### New Orleans Jazz Afternoon

**\$100 USD**

This afternoon, enjoy a jazz brunch at one of New Orleans' most famous restaurants, The Court of Two Sisters. Relax and enjoy the live jazz music as you soak in the centuries-old atmosphere and the largest courtyard in the French Quarter. Indulge in the expansive brunch buffet, with over 60 items available, including made to order omelets and Eggs Benedict. After lunch, embark on a leisurely cruise aboard the traditional Steamboat Natchez, iconic in New Orleans. The ambience will transport you back in time to the 19th century when steamboats were the transportation of choice to travel along the Mississippi. Sit back and take in your surroundings during your narrated harbor tour, listening to stories of days gone by along the way. As your paddlewheel boat makes its way back, it is time for a lively jazz band to take the stage for some toe-tapping fun! *Duration: Approximately 4.5 hours.* Please note a minimum of 10 passengers is required. Transportation is not included.

#### Nashville, TN

##### Opry Amplified: Best Seats & Behind the Scenes

**\$145 USD**

Amplify your experience at the Opry with this option for upgraded seating and a 1-hour backstage tour. You'll enjoy a great view of the stars gracing the Opry's stage with upgraded Tier 1 seats. After the show, it's time to pull back the curtain and get an up-close look around the house where country music stars and legends make history each week. Get behind-the-scenes access and insider stories as you see the Opry's themed dressing rooms, artist entrance, broadcast studio, and more. This option must be purchased at least 30 days prior to departure and is not available while on tour. A maximum of 10 travelers can purchase this optional tour, and it's available on a first come, first served basis. *Duration: Approximately 1 hour.* Please note a minimum of 1 passengers is required. Transportation is not included.



TRAVEL DATE: 5/17/2026 TERRITORY: W6  
RES#: 1368339

Discover America's Music Cities featuring  
New Orleans, Memphis & Nashville

This form is intended for use by the Group Leaders only. Please note that Collette is unable to process this form

A deposit of \$698 per person is due upon reservation. Reservations are made on a first come, first served basis. Reservations made after the seat reduction date of November 10, 2026 are based upon availability. Final payment due by February 16, 2026. Deposits are refundable up until November 17, 2026.

**YOUR INFORMATION:**

Clearly print your full name (first/middle/last) as it appears on your government issued travel documentation.

**IMPORTANT:** In order to avoid any unnecessary change fees, it is imperative that all guest names are entered correctly from the start. The information below must be the legal name and be 100% identical to the ID being used to travel <passport/driver's license> including middle names or suffixes <Jr, Sr>.

First: \_\_\_\_\_ Middle: \_\_\_\_\_ Last: \_\_\_\_\_ Suffix: \_\_\_\_\_

Nickname: \_\_\_\_\_ Gender: ( ) Male ( ) Female Date of Birth: month \_\_\_\_\_ day \_\_\_\_\_ year \_\_\_\_\_

Address: \_\_\_\_\_ City: \_\_\_\_\_ State: \_\_\_\_\_ Zip Code: \_\_\_\_\_

Phone: ( ) \_\_\_\_\_ Cell: ( ) \_\_\_\_\_ Email Address: \_\_\_\_\_

Should you become ill or injured, whom should we contact (not traveling with you): \_\_\_\_\_ Phone: ( ) \_\_\_\_\_

**ROOMING WITH:** ☐ Check if address is the same as Passenger #1

First: \_\_\_\_\_ Middle: \_\_\_\_\_ Last: \_\_\_\_\_ Suffix: \_\_\_\_\_

**AIR GATEWAY:** Departure airport for this tour: \_\_\_\_\_

Air Seat Request: ( ) Aisle ( ) Window ( ) Next To Traveling Companion

Collette cannot guarantee your seat preference. If you have not purchased air through Collette and wish to purchase transfers, you must transfer at our pre-scheduled times.

Please be advised, when travelling as part of a group, many airlines do not provide seat assignments. Preferred seating may be available for an additional charge.

"Federal law forbids carriage of hazardous materials such as aerosols, fireworks, lithium batteries & flammable liquids aboard the aircraft in your checked or carry-on baggage. A violation can result in 5 years' imprisonment and penalties of \$250,000 or more. Details on prohibited items may be found on TSA's "prohibited items" web page: <http://www.tsa.gov/traveler-information/prohibited-items>."

**TRAVEL PROTECTION:** ( ) Yes, I wish to purchase travel protection \$429 ( ) No, I decline

If you choose not to purchase Collette's Waiver Insurance Plan, you will incur penalties for changes and cancellations. Travel Protection Payment is due with first deposit. The Waiver Fee does not cover any single supplement charges which arise from an individual's traveling companion electing to cancel for any reason prior to departure. The single supplement will be deducted from the refund of the person who cancels. (There is coverage under Part B which includes a single supplement benefit of \$1,500 for certain covered reasons. See Part B for details.)

**ON TOUR ACTIVITIES: Please choose one of the following on tour hotels**

Please Choose One: *(subject to availability)*

( ) Gaylord Opryland Resort – Standard (included)

( ) Gaylord Opryland Resort – Superior (additional charge of \$65.00 double, \$130.00 single required)

**Would you like to purchase a pre night?** ( ) Yes ( ) No

**Rates:** Double \$150 per person per night; Single \$300 per person per night; Triple \$140 per person per night

**PLEASE MAKE CHECKS PAYABLE TO:** Collette



162 Middle Street  
Pawtucket RI 02860  
Phone: 1-800-852-5655

**TOUR:** Discover America's Music Cities featuring New Orleans,  
Memphis & Nashville

**GROUP NAME:** Destinations With Grace

**DEPARTURE DATE:** May 17, 2026

**BOOKING NUMBER:** 1368339

## AVAILABLE PREPAID OPTIONS

Personalize your tour by adding an optional activity below. Our recommended options have been carefully chosen to help enhance your individual experience. Complete the provided Prepaid Options Form to reserve your options.

Availability is limited and reservations are on a first come, first served basis. Payment must be received no later than 15 days prior to departure. Prices are subject to change. Children under the age of 18 MUST be accompanied by an adult.

**PASSENGERS NAME:** (Please submit a separate form for each passenger)

Salutation: \_\_\_\_\_ First: \_\_\_\_\_ Middle: \_\_\_\_\_ Last: \_\_\_\_\_ Suffix: \_\_\_\_\_ Nickname: \_\_\_\_\_  
(Mr., Mrs., Rev.) (Please print **EXACTLY** as it appears on the government issued travel identification) (Jr., Sr.)

✓	Option	Price Per Person (USD)
	New Orleans Jazz Afternoon	100.00
	Opry Amplified: Best Seats & Behind the Scenes <i>This option must be purchased at least 30 days prior to departure and is not available while on tour. A maximum of 10 travelers can purchase this optional tour, and it's available on a first come, first served basis.</i>	145.00



## Special Needs Form

Please complete this form, sign and return it to us within 14 days of receipt.

Email: [TravelOperations@collette.com](mailto:TravelOperations@collette.com)

Fax: 401.727.4745

Mail: Collette: Travel Operations  
180 Middle Street  
Pawtucket, RI 02860

### TRAVELERS NEEDING SPECIAL ASSISTANCE

You must report any disability requiring special attention to Collette at the time the reservation is made. \*Collette will make reasonable efforts to accommodate the special needs of tour participants. Such participants, however, should be aware that the Americans with Disabilities Act is inapplicable outside of the United States and facilities outside the United States for disabled individuals are limited. It is strongly recommended that persons requiring assistance be accompanied by a companion who is capable of and totally responsible for providing the assistance. Neither Collette nor its personnel, nor its suppliers, may physically lift or assist clients into transportation vehicles. If a traveler thinks he or she might need assistance during a trip, he or she should call Collette to determine what assistance might reasonably be given. Collette cannot provide special individual assistance to tour members with special needs for walking, dining, or other routine activities. Internationally, a great deal of walking may be necessary to fully enjoy the destination. Travelers should be in good health and must be able to walk reasonable distances. In some areas, travelers may be required to walk on uneven ground, cobblestone streets or raised thresholds.

***\*To request a wheelchair accessible room on a cruise, the traveler or person sharing the room must have a recognized disability that alters a major life function and requires the use of a mobility device and the use of the accessible features provided in the wheelchair accessible stateroom. The cruise company may take appropriate action against someone who has reserved or purchased such a stateroom fraudulently. Action may include but is not limited to removal from the stateroom to a non-accessible accommodation up to denial of boarding.***

Reservation # \_\_\_\_\_

Name: \_\_\_\_\_ Male or Female (circle one)



**Are you traveling with a wheelchair?** Yes No

If you answer "YES"

- Does your wheelchair collapse? Yes No
- Can you stand and climb steps to board the coach without it? Yes No
- Are you capable of lifting your own wheelchair? Yes No

If you are not capable of lifting your own wheelchair who will provide assistance?

---

*This form cannot be processed without the dimensions of your wheelchair:*

Height \_\_\_\_\_ Length \_\_\_\_\_ Width \_\_\_\_\_

**Are you traveling with a walker?** Yes No

If you answer "YES"

- Does your walker collapse? Yes No

*This form cannot be processed without the dimensions of your walker:*

Height \_\_\_\_\_ Length \_\_\_\_\_  
Width \_\_\_\_\_

*Tour Managers and drivers do not provide assistance lifting, pushing or carrying wheelchairs or walkers. Motorized scooters are not permitted on tour.*

**Are you requesting any hotel room accommodations?** Yes No

If "YES" Please indicate if one or more of the following is required in the washroom.

- Walk-in shower Yes No
- Grab bars Yes No
- Raised toilet seat Yes No

*Please provide any details in reference to the nature of your request.*

---

---

Most hotel rooms that can accommodate the request will be equipped with only 1 bed.

**Do you understand and accept?** Yes No

Collette cannot guarantee the availability of such rooms as many hotels have a limited number of rooms that are equipped with the above accommodations.

**Are you traveling with an oxygen tank?**    Yes    No

If you answer "YES"

- You must contact the airline directly to arrange transportation of the oxygen on the plane. Oxygen requests vary by airline and location and can take up to 2 weeks to request.
- You are responsible for supplying your own electrical cords, and converters as needed.

This form must be remitted within 14 days of receipt for any special needs accommodation request.

*Collette cannot provide special individual assistance to tour members with special needs for walking, dining, or other routine activities and motorized scooters are not permitted on tour.*

The Americans with Disabilities Act only applies in the United States. Many international destinations cannot accommodate passengers' requests. Collette will make all reasonable efforts to accommodate the special needs of tour participants, but we cannot guarantee that all requests will be honored on international destinations.

Collette also regrets that it cannot provide individual assistance to a tour member with special needs for walking, dining, or other special personal needs. It is strongly recommended that persons requiring assistance be accompanied by a companion who is capable and totally responsible for the assistance.

I have read and understand the above:

**Signature:** \_\_\_\_\_

**Print Name:** \_\_\_\_\_

**Internal Use Only**

Reason: \_\_\_\_\_

Tour: \_\_\_\_\_ Reservation # \_\_\_\_\_

TS/Group: \_\_\_\_\_

Tour Date: \_\_\_\_\_